

LAKE SHORE NEWS

April 2021

Lakeshore Website
www.Lakeshorecommunityhoa.com

QUESTIONS OR CONCERNS?

FEEL FREE TO CONTACT THE EMMONS COMPANY

MANAGER:
Michele Brooks
mbrooks@emmonsco.net

CUSTOMER SERVICE:
Veronica Landeros
vlanderos@emmonsco.net

BOOKKEEPER:
Ellen Henderson
ellen@emmonsco.net

Get a hold of us!
We are happy to assist you.

Phone:
(805) 413-1170
24 hrs / 7 days a week.

Fax:
(805) 413-1190

By Mail:
P.O. Box 5098
Thousand Oaks
California, 91359

Have a topic you would like to see in the newsletter?



BOARD MEETING NEWS

MARCH 24TH MEETING:

- **Insurance Policy Renewal**
- **Discussion of Current County Orders for Reopening Recreational Facilities**

NEXT BOARD MEETING

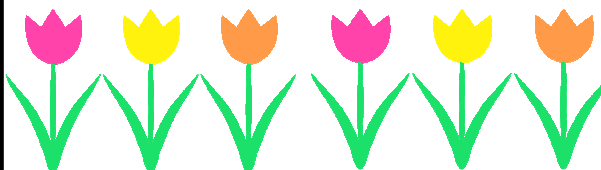
**Wednesday, April 28th at 5:30 p.m.
Via Telephone/Video Conference**
All members are welcome to call in.

Agendas are available on the Lakeshore website four days before a meeting date.

POOLS/PADDLE TENNIS COURT UPDATE

The Board of Directors, along with the Association's legal counsel, have been diligently working on a plan to reopen Lakeshore's pools and paddle tennis court. At the last board meeting, the Board agreed to prioritize the reopening of the paddle tennis court due to less protocol restrictions than is required for the reopening of the pools. Please be assured that the Board also wants the facilities reopened and are working hard to achieve that; while at the same time making sure that it is done properly and according to the County Department of Health's required protocols. We will continue to provide residents with updates as they become available.

The Board thanks you for your continued patience and cooperation!



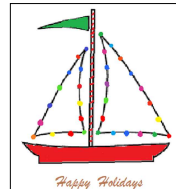
CARP IN THE LAKE

Our lake has been invaded by a fish called Common Carp. This is a non-native invasive species that can have a negative impact on other fish species such as bass, turtles and even birds. As bottom feeders, they keep the lake roiled up and muddy looking. Common Carp can grow to a size of 8-10 lbs. WLMA has contracted with Stillwater Sciences, an aquatics environmental firm, to help control the carp.

More info is available on the WLMA website. www.westlake-lake.com.



BOAT REGISTRATION



The California Dept of Motor vehicles (DMV) requires all boats on public and private lakes to be registered and to display proper CF numbers.

Paddles kayaks, canoes, and sculls are exempt. The DMV conducts on-site inspections for compliance.

More information is available on the WLMA website including a link to on-line registration. www.westlake-lake.com.

SAFETY REMINDERS

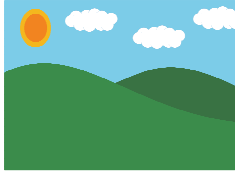


Spring Break is headed our way which means kids will be out playing and there may be more traffic. Please be cautious and slow down when in and around areas populated with children.

Please come to a full STOP at stop signs and look for children and pedestrians at the crosswalks.

LAKESHORE NEWS

GREENBELT ETIQUETTE



With the warmer weather many residents are spending more time outdoors. With the increase in pedestrian activity on our greenbelts, we would like to remind residents of the

greenbelt rules:

- ◆ Guests must be accompanied by Members whenever the guests use the Association's recreational facilities.
- ◆ Residents must provide adult supervision for minors who reside in their residence or are guests who use the Association's recreational facilities or common areas.
- ◆ Skateboarding, roller skating/blading, bicycling, scooters skateboards, or using motorized vehicles on the walkways or the grass areas is not permitted.

Please remember to be considerate of the surrounding neighbors when using the common areas.

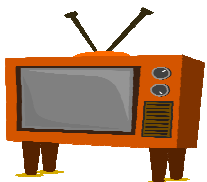
PET REMINDERS



Per City Code and Association CC&Rs, when walking your pet through the neighborhood, animals must be *kept on a leash at all times*. It is also your responsibility to clean up after your pets! When taking your beloved

pets for a walk remember to go armed, take plastic bags with you so you can clean up and dispose of the droppings properly. **For anyone experiencing problems with a neighbor's dog, we recommend that you contact Los Angeles County Animal Control at (818) 991-0071. All complaints should be filed with them.**

SPECTRUM CABLE



For any equipment, billing or service issues, please contact the bulk customer service number at 833-697-7328. They will need your street address to access your account.

If your problems go unresolved, please contact The Emmons Company for assistance.

BROKEN SPRINKLERS



If you see a broken sprinkler in the common area as you're walking or driving through the neighborhood we ask that you call the office and report it. The irrigation runs in cycles and sometimes it remains undetected for a period of time. **So, if you see an area with a broken sprinkler, please call it in to The Emmons Company at 805-413-1170.**

Also be sure to regularly check your own sprinklers for broken pipes or leaking.

STREET SWEEPING

Street sweeping takes place every **other week on Thursdays**. For the month of April street sweeping will take place on the 1st, 15th, and 29th for Lakeshore. Moving your cars off the street on cleaning days is especially important to allow proper cleaning. If you have visitors or contractors please ask them to park in your driveway. If street parking is necessary, please sweep the gutter debris to twenty feet ahead or behind the parked vehicle. For additional information on this service, please contact City Hall at (818)706-1613.



TRASH CAN REMINDER

No resident shall place their trash containers so as to be visible from neighboring Lots except for the purpose of trash collection and then only for the shortest reasonable time to effect such collection. **Trash containers shall be placed at your curb no earlier than 5 p.m. the day prior to collection and returned to your premises and stored out of view by 8 a.m. the day following collection. Please remember to not overfill your trash can.**

