

LAKE SHORE NEWS

October 2020

Lakeshore Website
www.Lakeshore
communityhoa.com

QUESTIONS OR
CONCERNS?

FEEL FREE TO
CONTACT
THE EMMONS
COMPANY

MANAGER:
Michele Brooks
mbrooks@
emmonsco.net

CUSTOMER
SERVICE:
Veronica
Landeros
vlanderos@
emmonsco.net

BOOKKEEPER:
Ellen Hendersen
ellen@
emmonsco.net

Get a hold of us! We
are happy to assist
you.

Phone:
(805) 413-1170
24 hrs / 7 days a
week.

Fax:
(805) 413-1190

By Mail:
P.O. Box 5098
Thousand Oaks
California, 91359

*Newsletter Article
Ideas?? fmail:*

vlanderos@emmonsco.net

BOARD MEETING NEWS

TOPICS DISCUSSED AT THE SEPTEMBER 23 BOARD MEETING :

- NEW PEST CONTROL VENDOR SELECTED
- NEW LANDSCAPE CHAIR SELECTED
- POOLS & PADDLE TENNIS COURT
REMAIN CLOSED.



NEXT BOARD MEETING

October 28, 2020

5:30 p.m.

Held Remotely

All members are welcome to attend and are not required to call in at the start time. Agendas are available on the Lakeshore website 4 days before a meeting date.

FALL BACK



On Sunday, November 1st (the first Sunday in November) at 2 a.m., Daylight Saving Time ends in the United States. So before you go to bed Saturday night, make sure you "fall back" by setting your clocks back one hour and thus returning to standard time.

Local fire agencies recommend changing batteries in smoke detectors and checking your fire extinguishers when clock times are changed. In addition, check your emergency supply kit to make sure it is fully stocked and ready.

Revised Rule Approved - 3.7 (c) Painting and Roof Walking Pads

At the Board of Directors meeting held on August 26, the Board approved the revision to Architectural Rule 3.7 (c) Painting and Roof Walking Pads.

WLTV CITYCARE

Did you know that your City has a site for reporting maintenance issues? Fallen trees, broken water mains or sprinklers, pot holes, graffiti, street light outages, animal control, abandoned vehicles, noisy construction or gardeners after hours or Sundays, the municipal code, etc.



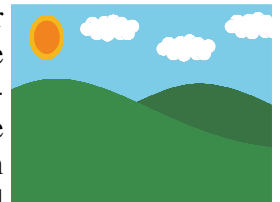
Type the address for the City, see below, into your browser and open the page. You can then save the site in your bookmarks or favorites for when you need it:

City of WLTV web site address:
www.wlvtv.org

Click on the "RESIDENTS" tab and then click on "**CityCare**". If you don't see your topic on the list type it into the "Looking For Information" search box next to the menu.

GREENBELT ETIQUETTE

With the warmer weather many residents are spending more time outdoors. With the increase in pedestrian activity on our greenbelts, we would like to remind residents of the greenbelt rules:



- ◆ Guests must be accompanied by Members whenever the guests use the Association's recreational facilities.
- ◆ Residents must provide adult supervision for minors who reside in their residence or are guests who use the Association's recreational facilities or common areas.
- ◆ Skateboarding, roller skating/blading, bicycling, scooters skateboards, or using motorized vehicles on the walkways or the grass areas is not permitted.

Please remember to be considerate of the surrounding neighbors when using the common areas.

LAKE SHORE NEWS

SATELLITE TV DISHES



If you are thinking about installing a satellite TV dish, please remember as with all exterior changes to homes in Lakeshore an architectural application is required. Often the installer will choose the easiest location rather than the least intrusive location.

Therefore the Association must approve the installation location before hand.

Lakeshore Architectural Rule 3.5, Satellite Dishes and Antennas, in addition to requiring that the installation be concealed as best possible requires painting of the dish with the same color as whatever part of the building is behind it, i.e., roof, wall.

The DirectTV (AT&T) website published the following advice for painting dishes:

Q: Can I paint the satellite dish?

A: It's okay to paint your dish if you don't use lead-based or glossy paint. Glossy paint could damage the Low Noise Block (LNB)* converter by increasing the signal reflection. You should not paint the LNB itself. **Editor's Note: The LNB is the separate electronic item attached to the dish (reflector) in the photo.*

STREET SWEEPING

Leaves are falling in Lakeshore and most of them will eventually end up on our lanes. Moving your cars off the roadway on Thursdays is especially important from now until the first of the year. We usually see the sweeper in Lakeshore every Thursday between 10 and 2 except for holidays when they sweep on Friday.



If you have visitors or tradesmen please ask them to park in the driveway. If street parking is necessary please sweep the gutter debris to twenty feet ahead or behind the parked vehicle. Or just pick it up and put it in the trash.

Any leaves or debris on our streets that can't be swept up will eventually end up in our lake. Thank you for helping to keep up Lakeshore's wonderfully pristine appearance. and keeping our lake healthy.

COMMUNITY TRASH CANS



Trash cans located throughout the community help to maintain our beautiful community by keeping the common areas trash free. However, it's been noted that some residents are using these trash cans for their own personal trash. Please be sure to dump

your personal trash in your personal trash receptacles so that residents can continue to enjoy the common areas trash free. It is required by Westlake Village City Code to have and use trash service.

TRASH CAN REMINDER

No resident shall place their trash containers so as to be visible from neighboring Lots except for the purpose of trash collection and then only for the shortest reasonable time to effect such collection.

Trash containers shall be placed at your curb no earlier than 5 p.m. the day prior to collection and returned to your premises and stored out of view by 8 a.m. the day following collection.



SAFETY TIPS FOR POWER OUTAGES

Occasionally we can experience extended power outages. Here are some safety tips that may be useful in case Lakeshore experiences any outages:

- Use a battery-operated flashlight instead of candles, which may create a fire hazard.
- Keep a battery-operated radio available for news and information.
- Turn off all appliances and equipment, except one light to signal when the electricity is restored.
- Do not use equipment designed for outdoor cooking indoors– the fumes may be dangerous.
- Minimize driving in an outage area and be particularly careful at all intersections.

